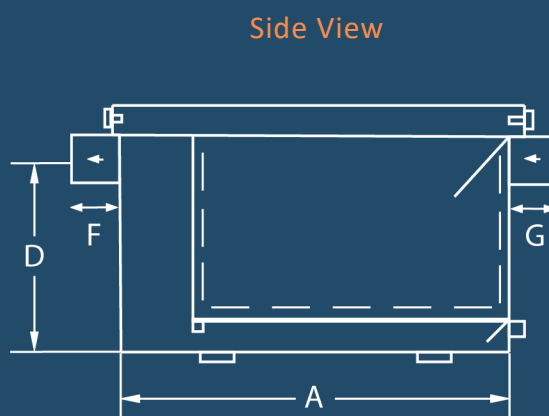
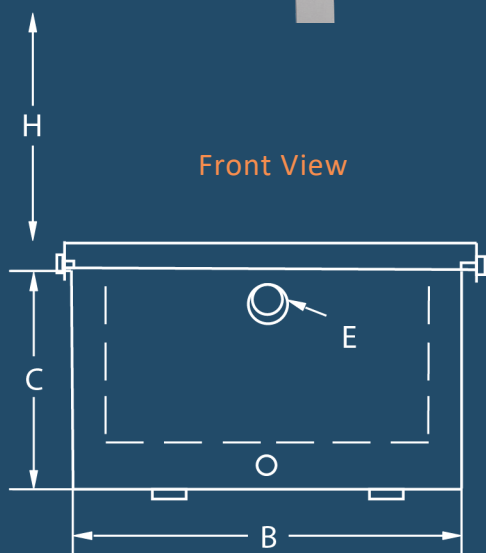


Manual Grease Trap GT Range Brochure



| Model | Length (A) | Width (B) | Height (C) | In/Outlet Height (D) | Diameter (E) | Outlet (F) | Inlet (G) | Clearance (H) | Weight |
|--------|------------|-----------|------------|----------------------|--------------|------------|-----------|---------------|--------|
| GT05 | 225 | 150 | 150 | 120 | 40 | 35 | 35 | 150 | 6 Kg |
| GT20 | 350 | 300 | 200 | 163-330 | 50 | 45 | 65 | 200 | 10 Kg |
| GT40 | 500 | 400 | 200 | 163-330 | 50 | 45 | 65 | 200 | 16 Kg |
| GT60 | 500 | 400 | 300 | 233-400 | 50 | 45 | 65 | 300 | 19 Kg |
| GT80 | 500 | 400 | 400 | 333-500 | 50 | 45 | 65 | 400 | 22 Kg |
| GT60M | 500 | 400 | 300 | 233-400 | 110 | 70 | 70 | 300 | 19 Kg |
| GT80M | 500 | 400 | 400 | 333-500 | 110 | 70 | 70 | 400 | 22 Kg |
| GT120M | 750 | 400 | 400 | 333 | 110 | 70 | 70 | 400 | 27 Kg |

All dimensions in mm. Inlet / outlet height from the middle of the pipe.

Manual Grease Trap

How it Works

Food & Solids Collection

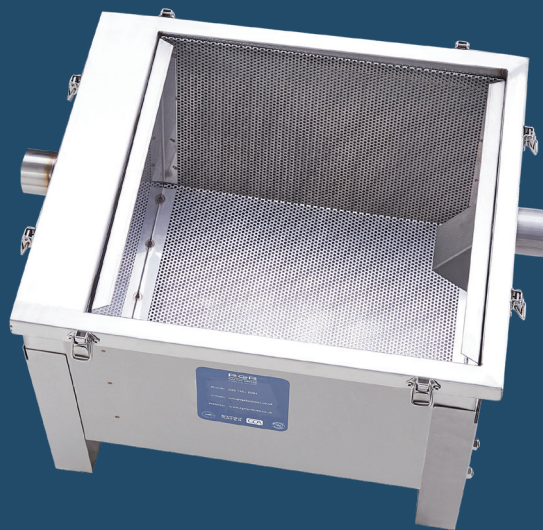
Wastewater from the kitchen is directed through the inlet of the Grease Trap, where a removable strainer basket collects any food waste or solid debris.

Grease & Oil Separation

Any grease in the waste water floats to the surface and is trapped, while the clear water leaves via the outlet and enters the drainage system.

Biological Dosing Fluid

Biological Drain Dosing Fluid can be used to break down fat and oil inside the grease trap, reducing the frequency with which it needs emptying.



304 grade stainless steel tank

Large Internal strainer basket

Guards drains (point of source)

One year warranty on all parts

Ideal for under-sink installations

Size subject to site requirements

Simple to install and to maintain

Any food waste can be recycled

Traps solids & food waste

Use with a dosing system

Adjustable extension legs

Hermetically fastened lid

Specification

16 Gauge 304 Stainless Steel. For invert levels, please contact your local supplier.

RGR Facilities Ltd

Unit 1C Westpoint
36-37 Warple Way
London, W3 0RG



T : 020 7221 6094

M : 077 1564 3579

W : rgrfacilities.co.uk